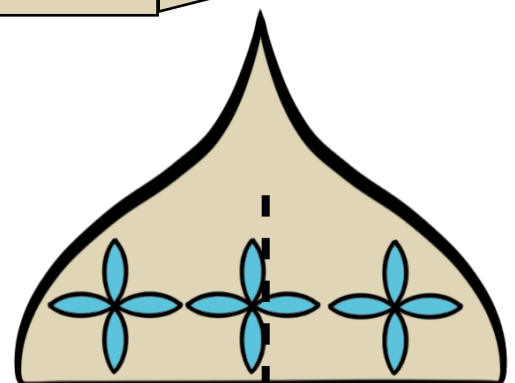
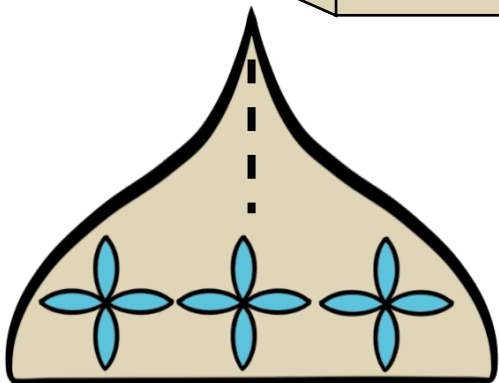
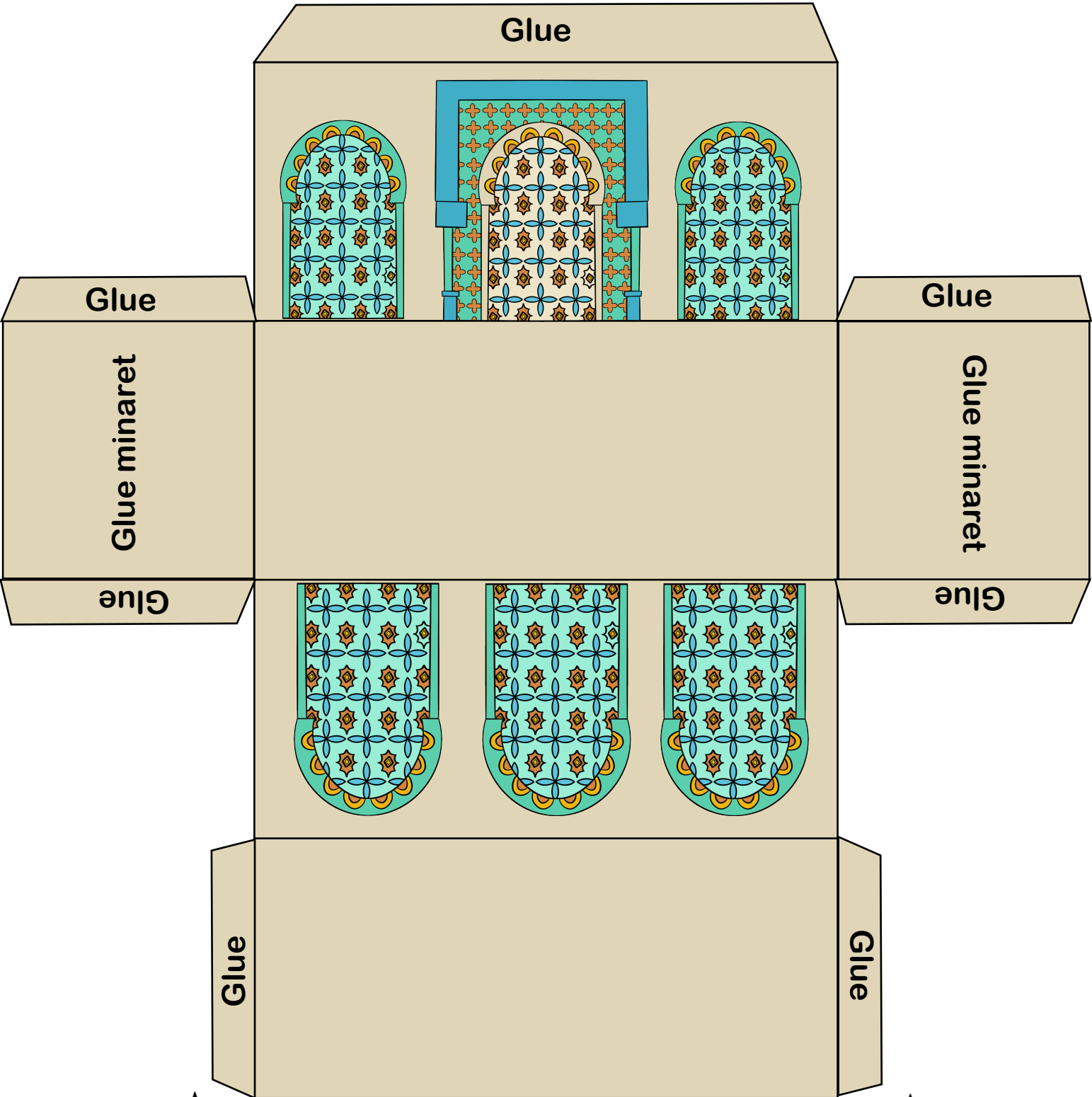


Paper Mosque Craft



Instructions

1. Fold along the solid lines then glue the tabs to make a cuboid. (Do this step for the mosque and the minarets)
2. Glue the minarets on the sides of the mosque as instructed.
3. Cut along the dotted lines on all of the domes, then insert each two together.
4. Glue the big dome on the mosque itself, and the small domes on the minarets.

