

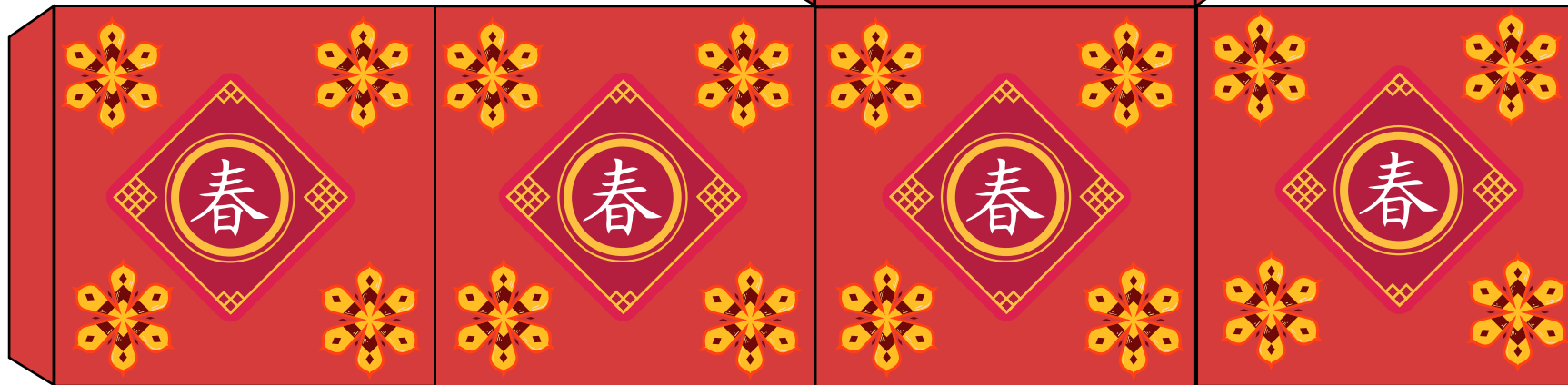
Circuit Preparation

1. Bend the pins of the LED at a 90 degree angle.
2. Place the battery between the pins and tape them together, then use the binder clip to hold everything tighter.

NOTE: Make sure the negative end of the battery (Which is the bottom) is connected to the negative part of the LED (which is the shorter pin)

Materials needed

- Scissors
- Tape
- 1 5mm LED
- Button Battery
- Binder Clip
- Vegetable Oil



Instructions

1. Cut everything out and fold along the solid lines, then use the tabs to create a cuboid.
2. Before gluing the cuboid together, put the LED inside, then close the cuboid.
3. Spray some vegetable oil on the cuboid to make it more translucent.
4. Watch the lantern light up!